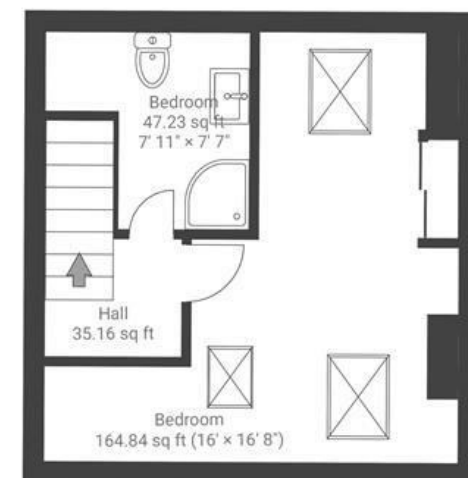
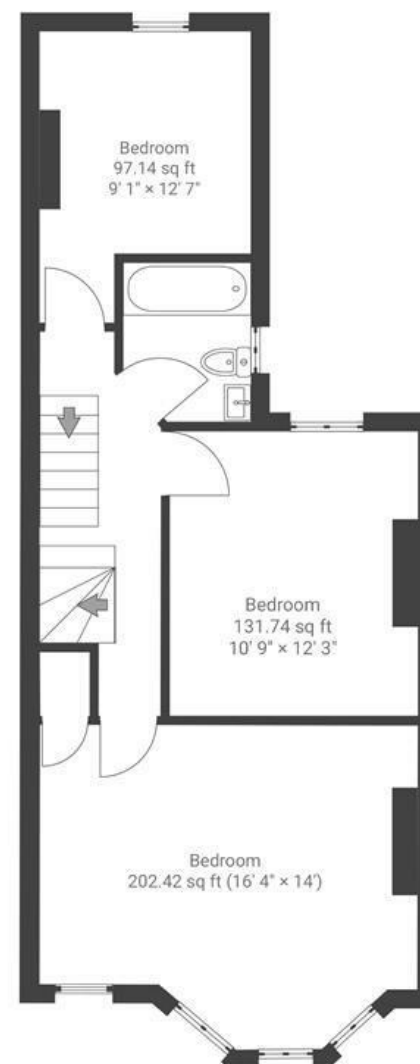
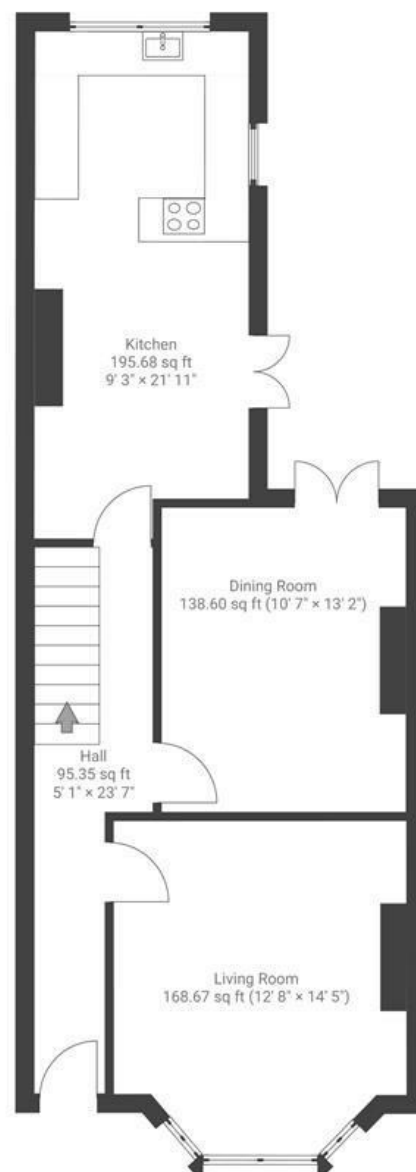


Downend Road

DOWNEND

APPROXIMATE FLOOR AREA
129.5 SQM / 1395 SQFT



Boardwalk

Downend Road

DOWNEND, BRISTOL

£

£400,000



BS16 5UF

zzz

4 Bedrooms



2 Bathrooms

"When we bought the house from the previous owners of 30+ years, we told them we couldn't wait to enjoy having a Christmas tree in the bay window and cooking together in the spacious kitchen. And we have! The steam oven and proving drawer have been a delight to the baker of the house. Some of our favourite moments are spent in front of a fire, watching sunsets and hot air balloons from the loft, and sitting in the garden by the jasmine in summer."

